



**3K**  
PLUG & PLAY



### Helpdesk / Technical Support


✉ [www.iget.eu/cs/helpdesk-centrum-cs](http://www.iget.eu/cs/helpdesk-centrum-cs)  
🌐 <https://helpdesk.intelek.cz/>

CE FC   Made in China

## Enforcer Wireless CCTV Kit


Quick Start Guide - EN

HGNVK-109104 / 109108



**CAUTION**

**RISK OF ELECTRIC SHOCK  
DO NOT OPEN**



---

**TO REDUCE THE RISK OF ELECTRIC SHOCK,  
DO NOT REMOVE THE COVER.**

**NO USER SERVICABLE PARTS INSIDE.**

**REFER SERVICING TO QUALIFIED PERSONNEL.**



The lightning flash with arrowhead symbol, within an equilateral triangle, is intended to alert the user to the presence of non-insulated "dangerous voltage" within the product's enclosure that may be of sufficient magnitude to constitute a risk of electric shock.



The exclamation point within an equilateral triangle is intended to alert the user to the presence of important operating and maintenance (servicing) instructions in the literature accompanying the appliance.

**WARNING:** **TO PREVENT FIRE OR SHOCK HAZARD, DO NOT EXPOSE THIS UNIT TO RAIN OR MOISTURE**

**CAUTION:** **TO PREVENT ELECTRIC SHOCK, ENSURE THE PLUG IS FULLY INSERTED INTO A MAINS SOCKET**

## IMPORTANT SAFEGUARD



All lead-free products offered by the company comply with the requirements of the European law of the Restriction of Hazardous Substances (RoHS) directive, which means our manufacturing processes and products are strictly "lead-free" and without the hazardous substances cited in the directive.



The crossed-out wheeled bin mark symbolizes that within the European Union the product must be collected separately at the product's end-of-life. This applies to your product and any peripherals marked with this symbol. Do not dispose of these products as unsorted municipal waste. Contact your local dealer for procedures for recycling this equipment.

## DISCLAIMER

We reserve the right to revise or remove any content in this manual at any time. We do not warrant or assume any legal liability or responsibility for the accuracy, completeness, or usefulness of this manual. The content of this manual is subject to change without notice.

## RECOMMENDATIONS

- **AVOID DUSTY LOCATIONS:** Excessive build-up of dust may cause the unit to fail.
- **INSTALL IN VENTILATED SPACE:** Ensure adequate airflow around the NVR to prevent overheating.
- **DO NOT EXPOSE TO MOISTURE:** Exposing the unit to water poses high risk of electric shock.
- **DO NOT DROP:** Doing so could damage internal components.
- **DO NOT OPEN CHASSIS:** No user-serviceable parts inside.

## TRADEMARKACKNOWLEDGEMENTS

- Internet Explorer™, Microsoft™ & Windows™ are registered trademarks of Microsoft Corporation.
- Apple™, iPhone™, iPad™ and iTunes™ are registered trademarks of Apple Computer, Inc.
- Android™ and Google Play™ are registered trademarks of Google Inc.

**NOTE**

Please create a user name and password for your device.  
Password must be 6 characters long.  
**Don't forget to write down your password:**

---

## WARRANTY AND TECHNICAL SUPPORT

To help you make the most of this product you'll find a host of information including full product manuals, FAQ, troubleshooting guides and a support service if you have specific questions, available at our support website : [homeguardworld.com/support](http://homeguardworld.com/support).

# CONTENTS


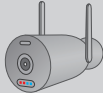
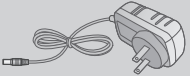



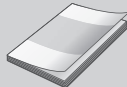
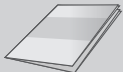

Package Contents .....	4
Parts & Description .....	5
Record video .....	6
Initial Setup .....	7
Setting Up the NVR .....	8
Connecting with Homeguardlink .....	9
Red&Blue Flashing Light .....	10
Installing the Cameras .....	11
Pairing the Camera .....	13
Troubleshooting .....	14

# Package Contents

Please unwrap the product, and place the product on a flat place or in the place to be installed. Please check the following contents are included in addition to the main unit.

- The appearance of the components may differ from the image shown.
- Accessory category and quantity may differ depending on sales region.

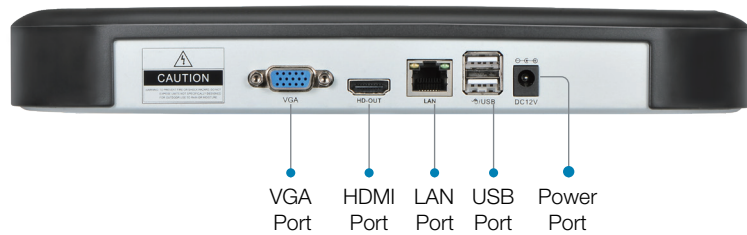
Check the contents of your NVR package against this checklist. If anything is missing or damaged, please do not use the system, and inform your supplier as soon as possible.

		
Wireless NVR	Wireless SpotlightCam	Power Adapter
		
Mouse	Ethernet Cable	Positioning Hole Stickers
		
Quick Start Guide	Warranty Card	Theft Deterrent Stickers

## NOTE

This manual covers 10 Channel versions of the Homeguard wireless NVR kits model: HGNVK-109104 / 109108.

# Parts & Description



Items	Part Names	Functions
1	Power LED	Connect the attached power supply
2	HDD LED	Flashes when the HDD is in use
3	Network LED	Flashes when the internet is connected

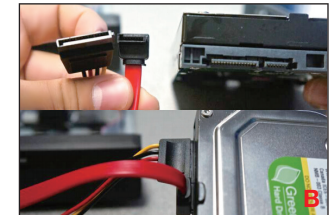
# Record video

The system may not include hard disk depending on the kit you selected. The NVR works with most 3.5" SATA HDD.

- Steps to install a hard drive (if your system has pre installed HDD, please skip this step)



Unplug your NVR from power, unscrew and remove the top cover.



Connect the SATA power & data cables from the NVR to the corresponding ports on your HDD(as shown).



Place the HDD into the NVR. Any cable should cross up over the HDD.

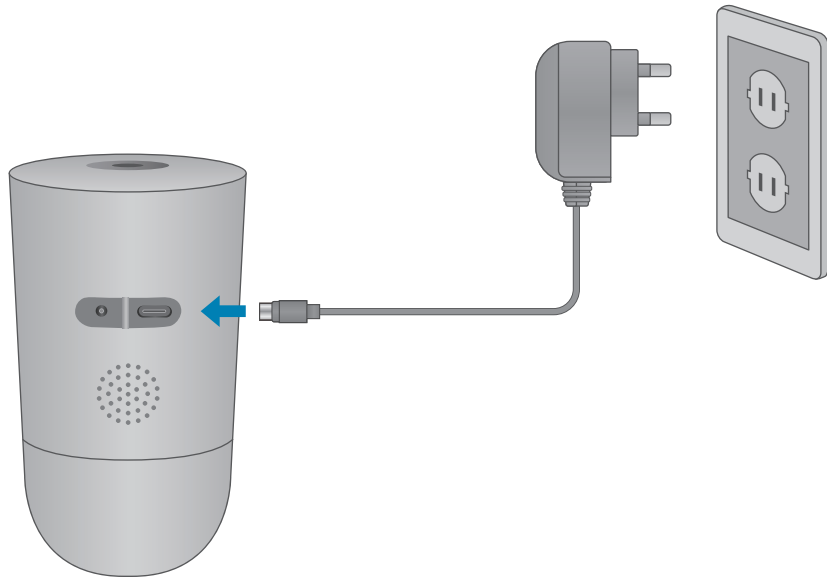


Holding the hard drive and the NVR, gently turn it over and line up the holes on the hard drive with the holes on the NVR. Using a Phillips screwdriver, screw the provided screws into the holes. Assemble the cover.

- Record video  
Record videos is very easy on Homeguard camera system.
- Timing Record, set time periods you want the NVR to record. Click right button → System Setup → Camera Record Mode; here you can setup periods you want the NVR to record. Continuous recording means 24x7 recording. The system records 24x7 by default when it detects hard disk.
- Event Recording. The Event Recording means certain channel(s) will be recorded only when the camera detects motion, human and other events. Click right button → System Setup → Camera Record Mode → Event Recording.

## Initial Setup

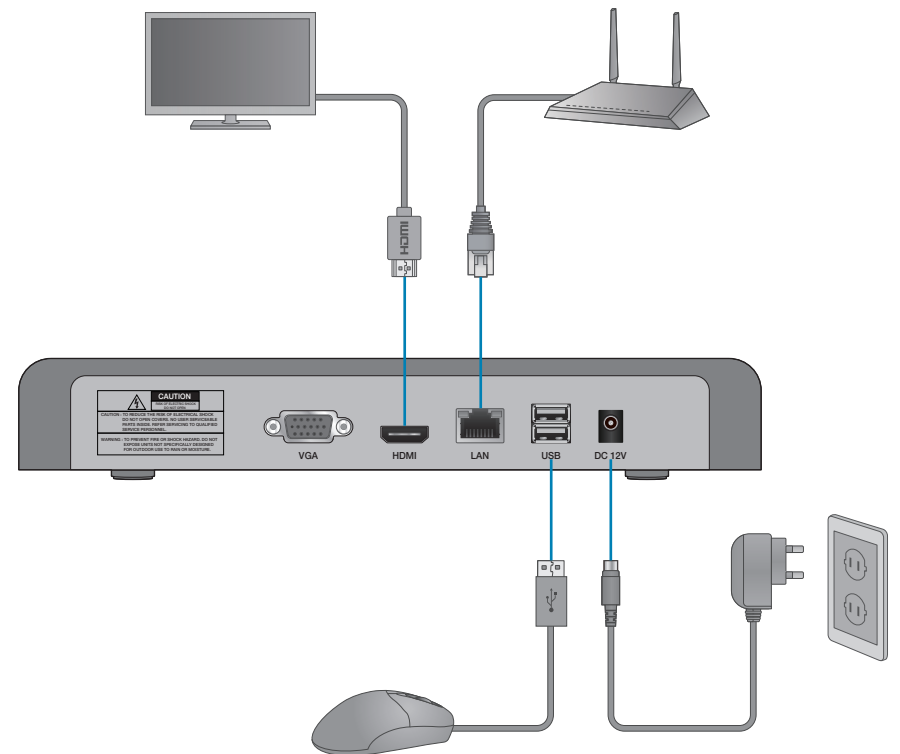
Use the included power adapter to connect the camera to a nearby outlet.



## Setting Up the NVR

Next, you must set up the NVR and connect it to your network.

- 1 Depending on the monitor port, connect the HDMI or VGA cable from your monitor to the HDMI or VGA Port on the rear panel.
- 2 Connect one end of the Ethernet cable into your router's LAN port, and the other end of the cable to the Ethernet port on the rear panel.
- 3 Connect the mouse to the USB Port on the front or back panel of the NVR.
- 4 Use the included power adapter to connect the recorder to a nearby outlet.



# Connecting with Homeguardlink

- 1 For the best experience, download the **Homeguardlink** app for your smartphone by scanning the QR code below or searching for **Homeguardlink** in the App Store or Google play.

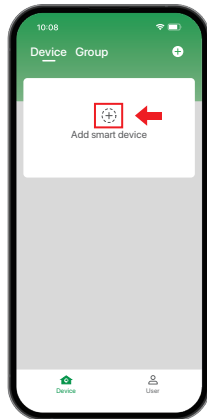


iOS - iPhone & iPad



Android - Phone & Pad

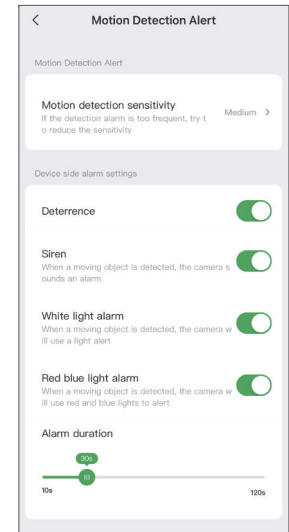
- 2 Tap “+” to add the device.
- 3 Scan the QR code at the top of your NVR using the camera on your smartphone or tablet.



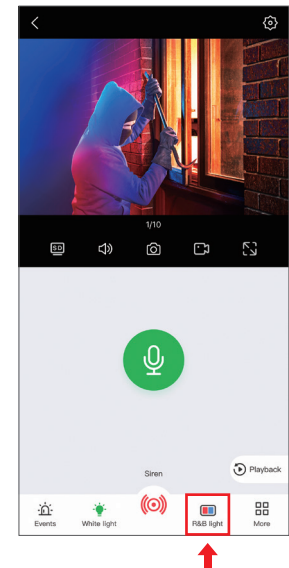
- 4 Your system will appear on the home screen of the app. Tap each channel with a camera connected then tap the play button to stream live video.

# Red&Blue Flashing Light

- 1 On the **Homeguardlink** APP, tap Setting and go into Motion Detection Alert. You can set the red and blue lights and linked with the time schedule when the alarm is triggered.



- 2 You can also turn **on/off** the red and blue lights by clicking the red and blue light icons during preview.



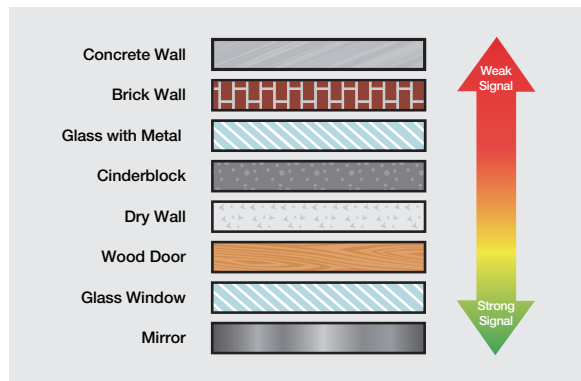
# Installing the Cameras

## Plan Your Installation

When planning your installation, keep the following pointers in mind:

**Distance:** The further the camera is from the Wireless NVR or monitor, the higher the chances of signal degradation. Locate the camera's power supply as close to the camera as possible and ensure the camera does not exceed the Wi-Fi range for your model. See your product's specifications for the range limit.

**Obstacles:** When your wireless signal is transmitted through various materials, such as walls and windows, the signal strength is affected. Though the Wireless NVR and Wireless IP camera may be very close in proximity, you could still notice high signal interference if the signal passes through certain obstacles. For instance, if the signal passes through a concrete wall it will be severely weakened. Please reference the chart below to see which obstacles highly affect your signal and which do not.



**Electrical Interference:** Do NOT place the cameras near high voltage wires or other sources of electrical interference. Electrical interference degrades the quality of the signal.

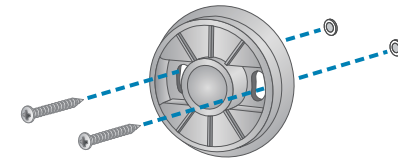
**Outside Elements:** Avoid direct exposure to weather. Do not place the camera where rain or snow will hit the lens directly. Do not place the camera so that the sun or bright light shines directly into the lens. Your camera is weatherproof, but it will not work when submerged in water. Ensure that all power connections are not directly exposed to water and are protected from the elements.

**Mounting Surface:** Ensure your mounting surface holds at least four times the camera's total weight.

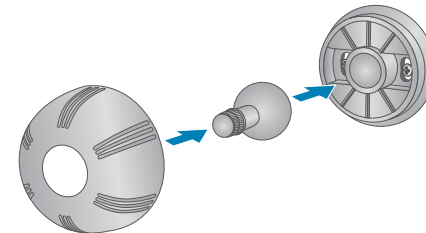
**Camera Angles:** Use the Live View on your Wi-Fi NVR to verify that your camera will be at an ideal angle before permanently installing.

Follow the instructions below to secure the cameras. It is recommended that you refer to the "Installation Tips" section to help you select good mounting locations.

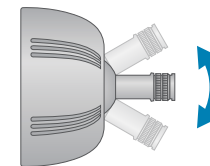
- 1 Place the wall mount against the wall, with the arrow pointing up, and secure it with screws.  
*If you are mounting the camera on drywall, we recommend using the included wall anchors.*



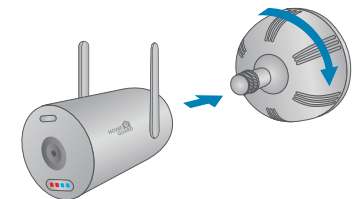
- 2 Insert the mount housing to the wall plate. Turn the mount housing clockwise, until it clicks in place.



- 3 Adjust the angle of the mount.



- 4 Attach the camera to the mount.



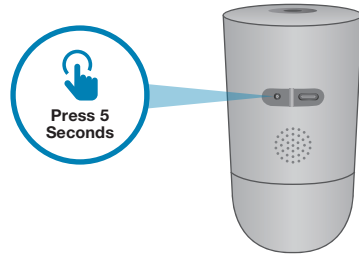
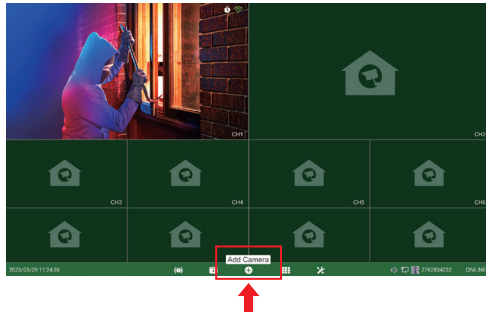
### NOTE

This camera includes an Auto Mechanical IR Cut Filter. When the camera changes between Day/Night viewing modes, an audible clicking noise may be heard from the camera. This clicking is normal, and indicates that the camera filter is working.

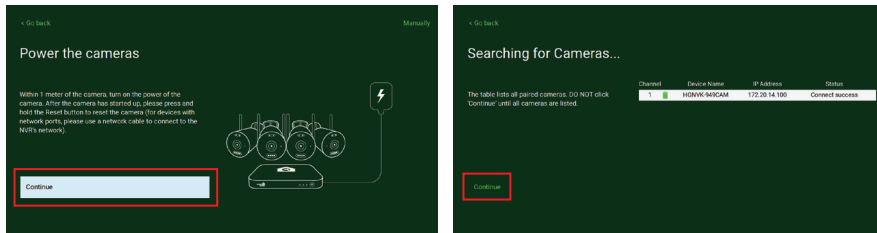
# Pairing the Camera

Your cameras should be paired to the wireless NVR and ready to use out of the package. If a camera becomes unpaired, or if you have purchased a wireless add-on camera (max. 10 cameras per system), follow the instructions below.

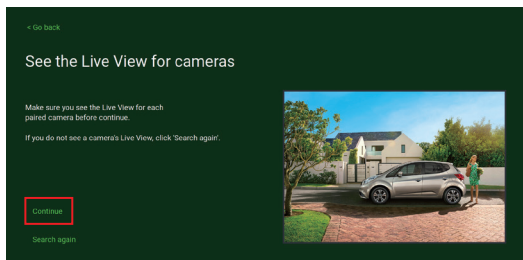
- 1 From Live view, tap + to Add Camera, hold the reset button on the camera for 5 seconds.



- 2 Tap Continue to search for cameras.



- 3 Make sure you see the Live View for each paired camera before continue.



# Troubleshooting

Problem	Possible Causes	Solutions
System is not receiving power or is not powering up.	Cable from power adapter is loose or is unplugged.	<ol style="list-style-type: none"> <li>1. Confirm that all cables are connected correctly.</li> <li>2. Confirm that the power adapter is securely connected to the back of the unit.</li> </ol>
	Cables are connected, but system is not receiving sufficient power.	<ol style="list-style-type: none"> <li>1. Confirm that the system is powered ON (LED indicators on the front should be ON).</li> <li>2. If the unit is connected through a power bar or surge protector, try bypassing the bar and connecting the power directly to the wall outlet.</li> <li>3. Confirm that there is power at the outlet.</li> <li>4. Connecting the power cable to another outlet.</li> <li>5. Test the outlet with another plugged device (such as a phone charger).</li> </ol>
Mouse not detected by system.	Mouse cable is not firmly connected to the system.	Firmly connect the mouse cable to the USB Mouse port on the rear panel.
	Mouse is not connected to the system.	
System needs to be reset.	System needs to be reset.	Power off the system (disconnect power cable). Firmly connect a USB mouse to the USB Mouse port on the rear panel of the system. Reconnect the power cable to the DC 12V port on the rear panel.
		A "whirring" noise is coming from the system.
The system beeps at startup.		The beep at startup is normal.



# Warranty & Support

---

All the products sold are covered by 24 months warranty from the date of invoice.

## Warranty instructions:

1. Please contact us when the product is caused by its own fault within 2 year warranty.
2. Please mail us your written warranty card as soon as possible after purchasing our products so that we can repair or replace this product to its original operation condition. Or the company will not deal with it.
3. Please write the truth on the warranty card.
4. Paid for repairing as follows:
  - A. Equipment failure caused by human operation
  - B. Equipment failure caused by not conforming to the using environment
  - C. No warranty card
  - D. Warranty expired

Product model: \_\_\_\_\_

Product serial number: \_\_\_\_\_

Purchase date: \_\_\_\_\_

User name: \_\_\_\_\_

Contact person: \_\_\_\_\_

Telephone: \_\_\_\_\_



Note: Please keep the warranty card for the better service.  
For technical support, please contact us

[www.iget.eu/cs/helpdesk-centrum-cs](http://www.iget.eu/cs/helpdesk-centrum-cs)

<https://helpdesk.intelek.cz/>